

PERFORMANCE

Processor

Intel® Core™ i7-10510U (4C / 8T, 1.8 / 4.9GHz, 8MB)

Graphics

AMD Radeon™ 625 2GB GDDR5

Chipset

Intel SoC Platform

Memory

1x 8GB SO-DIMM DDR4-2666

Memory Slots

Two DDR4 SO-DIMM slots, dual-channel capable

Max Memory

Up to 64GB DDR4-2666

Storage

1TB HDD 7200rpm 2.5"

Optane™ Memory

None

Storage Support

HDD mode: up to two drives, 1x 2.5" HDD + 1x M.2 2242 SSD

- 2.5" HDD up to 2TB
- M.2 2242 SSD up to 512GB

Card Reader

MicroSD Reader

Optical

None

Audio Chip

High Definition (HD) Audio, Realtek® ALC3287 codec

Speakers

Stereo speakers, 2W x2, Dolby® Audio™

Camera

720p with ThinkShutter

Microphone

2x, Array

Battery

Integrated 45Wh

Max Battery Life

MobileMark® 2014: 12.3 hr
MobileMark 2018: 7.95 hr
JEITA 2.0: 12 hr

Power Adapter

65W USB-C

DESIGN

Display

14" HD (1366x768) TN 220nits Anti-glare

Touchscreen

None

Keyboard

Non-backlit, Spanish (LA)

Case Color

Black

Case Material

PC + ABS (Top), PC + ABS (Bottom)

Dimensions (WxDxH)

331 x 235 x 20.4 mm (13.03 x 9.25 x 0.80 inches)

Weight

1.61 kg (3.56 lbs)

SOFTWARE

Operating System

Windows® 10 Pro 64, Spanish

Bundled Software

None

CONNECTIVITY

Ethernet

100/1000M

WLAN + Bluetooth™

Intel AX200 11ax, 2x2 + BT5.2

WWAN

None

SIM Card

None

NFC

None

Standard Ports

- 1x USB 3.2 Gen 1 (Always On)
- 1x microSD card reader
- 1x Ethernet (RJ-45)
- 1x HDMI® 1.4b
- 1x headphone / microphone combo jack (3.5mm)
- 1x USB 3.2 Gen 1
- 1x USB-C 3.2 Gen 1 (support data transfer, Power Delivery and DisplayPort™ 1.2)
- 1x side docking connector
- 1x USB-C 3.2 Gen 2 (support data transfer, Power Delivery and DisplayPort 1.2)

Monitor Cable

None

SECURITY & PRIVACY

Smart Card Reader

None

Security Chip

Discrete TPM 2.0

Fingerprint Reader

Touch Style, Match-on-Host

Physical Locks

Kensington® Security Slot

Other Security

ThinkShutter camera cover

MANAGEABILITY

System Management

None

SERVICE

Base Warranty

3-year, Depot

Included Upgrade

3Y Onsite upgrade from 3Y Depot/CCI (5WS0A23006)

ACCESSORIES

Bundled Accessories

None

CERTIFICATIONS

Green Certifications

- TCO
- RoHS compliant
- EPEAT™ Gold
- ENERGY STAR® 8.0

Mil-Spec Test

MIL-STD-810G military test passed

MODEL

TopSeller	: No	Announce Date	: 2020-06-17
EAN / UPC / JAN	: None	End of Support	: 2026-12-20

Premier Support - A direct 24x7x365 line to our most elite technicians.



Advanced technical support, 24x7x365, in more than 100 markets



Technical Account Managers for proactive relationship and escalation management



Comprehensive hardware & OEM software support



Priority on service delivery and repair parts



Single point of contact for simplified end-to-end case management



Lenovo Service Connect Portal for customized reporting and product support

Accidental Damage Protection - Protection of your PC from the unexpected.

Experience shows that a significant portion of devices may be damaged (and not covered under warranty) in the first three years. Lenovo's Accidental Damage Protection service covers accidents beyond the system warranty such as drops, spills, bumps and even electrical surges. Make sure your new device has maximum protection, avoid unplanned costs and get peace of mind.

Base Warranty - Included with the systems you purchase, default 1- or 3-year coverage window.

Warranty Extensions & Upgrades - Service and protection that's right for your circumstances.

- Pick Up & Return Courier
- Onsite Support
- Technician Installed Customer
- Replaceable Unit Service
- International Warranty Upgrade

Lenovo may not offer the products, services or features discussed in this document in all regions. Lenovo may withdraw an offering at any time. Information is subject to change without notice. Consult your local representative for information on offerings available in your area. Lenovo reserves the right to change specifications or other product information without notice. Lenovo is not responsible for photographic or typographical errors. Lenovo provides this publication "as is" without warranty of any kind, either express or implied, including the implied warranties of merchantability or fitness for a particular purpose.

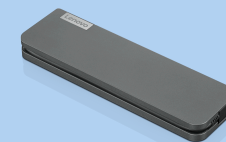
Recommended Accessories



ThinkPad Basic Docking Station (American Standard Plug)

40AG0090US

The innovative side connector of the ThinkPad Basic Docking Station, designed exclusively for ThinkPad notebooks, provides a driver-free way to connect conveniently and securely to a range of USB accessories and exter...



Lenovo USB-C Mini Dock_US

40AU0065US

Expand Your Potential with An Universal Mini Dock; Lenovo understands that modern business depends on a wide variety of PC's and even brands to meet their business needs. To make this easier Lenovo USB-C Mini dock is ...

For a full list of accessories and services, please visit:
<https://smartfind.Lenovo.com>

Lenovo

PSREF
Product Specifications
Reference